
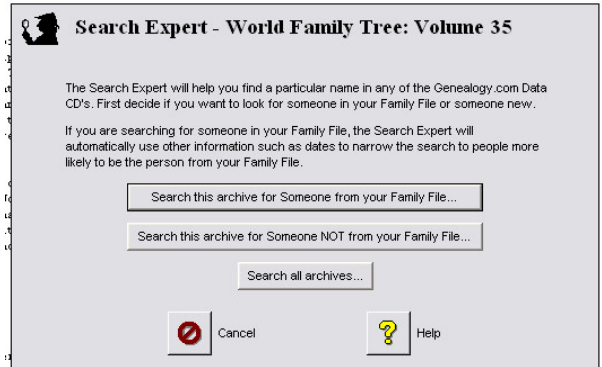


Using FTM Archive CDs

Open program, Insert CD, Click on  icon and the CD will open



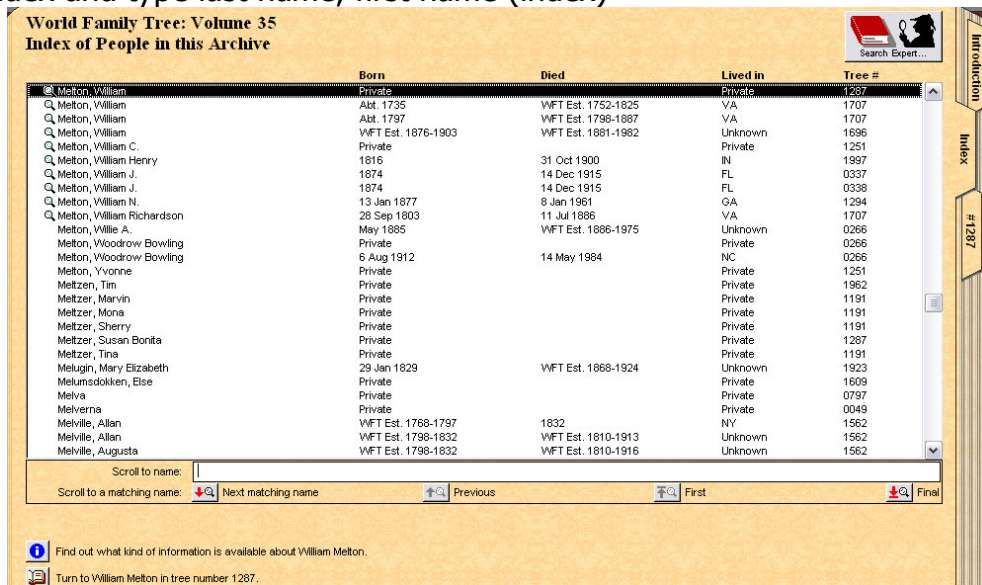
- Click on  and following window opens



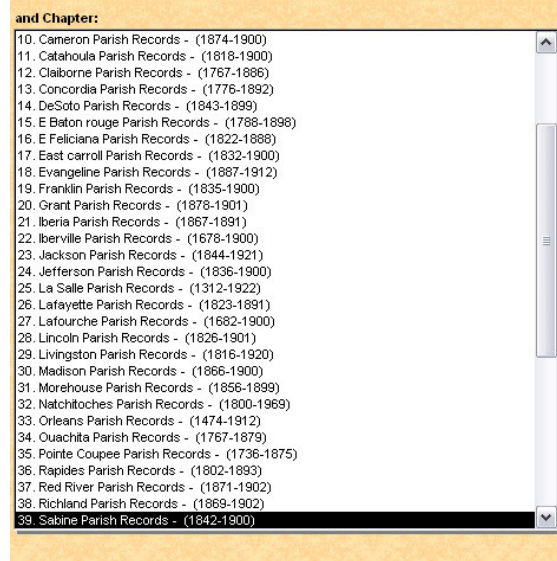
- Someone from your Family File, links to the index of your database
- Not from your Family File, allows you to search for any name



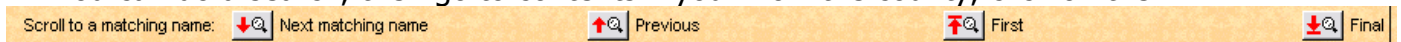
- Click on start search to get results
- Or go to index and type last name, first name (index)



- Some of the Archive CD's are indexed by state, then county (contents)

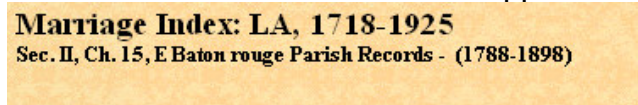


- Records are in alphabetical order by surname in each county. Some CD's have men only, some women, and some are mixed.
- You can do a search, then go to contents if you know the county, click on the




Next matching name to find the name, previous moves you back one, first will be the first name found on the CD, final the last

- The name of the CD and other information will be in the upper left hand corner



World Family Tree CD's

- Click on  to pull up tree, you can extract information from the tree, either in entirety, or a part
- If you want to copy the information do it on floppy, make sure when you copy/export you change the directory on the library computer and bring your own floppies.
- You can request submitter information from the familytreemaker.com site by going to World Family Tree Contributor Contact Information Service. You will need the number off the cd



to request the information.